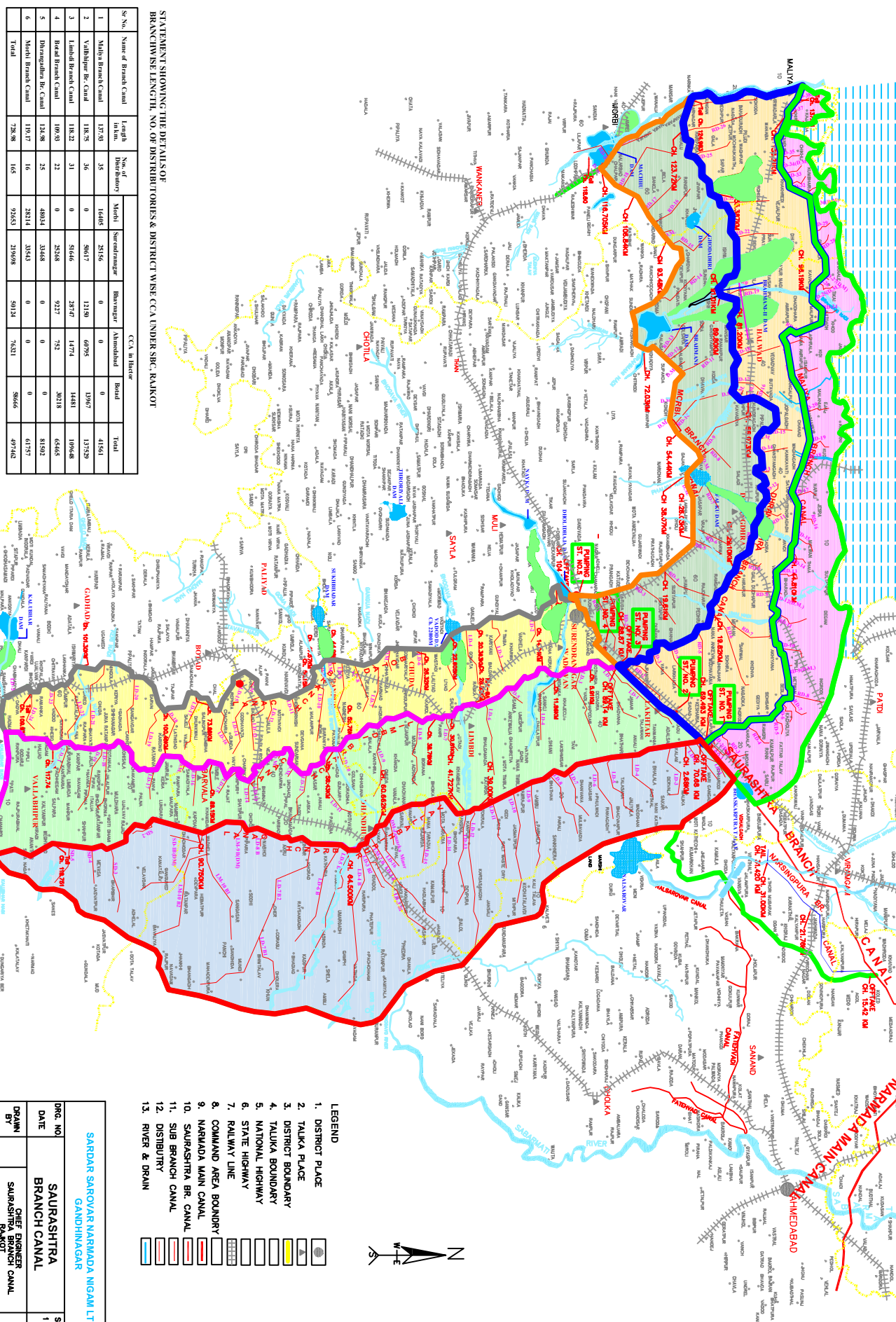


LITTLE RANN OF KUTCH

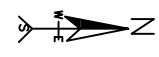


STATEMENT SHOWING THE DETAILS OF BRANCHWISE LENGTH, NO. OF DISTRIBUTORIES & DISTRICT WISE CCA UNDER SBC, RAKHOT

Sr.No.	Name of Branch Canal	Length in Km.	No. of Distributories	CCA in Hectare						
				Mandi	Shevramnagar	Bhavnagar	Amthadwad	Barad	Total	
1	Mandi Branch Canal	17.50	35	16485	25156	0	12180	6075	0	41896
2	Vadhvan Br. Canal	18.75	36	38617	0	13190	4075	1397	13750	56049
3	Limbdi Branch Canal	109.20	31	0	5646	28737	14771	14491	14491	106846
4	Barad Branch Canal	100.50	22	0	25748	9227	752	30718	0	65465
5	Dhordanaga Br. Canal	124.98	25	48024	32468	0	0	0	0	81492
6	Mandi Branch Canal	119.17	16	28214	25743	0	0	0	0	61957
	Total	728.96	165	92653	219098	50124	76221	38606	0	97542

MAP SHOWING COMMAND AREA OF SAURASHTRA BRANCH CANAL

- LEGEND**
- DISTRICT PLAGE
 - TALUKA PLAGE
 - DISTRICT BOUNDARY
 - TALUKA BOUNDARY
 - NATIONAL HIGHWAY
 - STATE HIGHWAY
 - RAILWAY LINE
 - COMMAND AREA BOUNDARY
 - NARMADA MAIN CANAL
 - SAURASHTRA BR. CANAL
 - SIB BRANCH CANAL
 - DISTRIBUTORY
 - RIVER & DRAIN



SARDAR SAROVAR NARMADA NIGAM LTD.
GANDHINAGAR

DRG. NO.	SAURASHTRA BRANCH CANAL	SCALE :
DATE		1 cm = 1 m
DRWN BY	CHIEF ENGINEER SAURASHTRA BRANCH CANAL RAKHOT	
TRACED BY	SUPERINTENDING ENGINEER S. B. C. CORLE NO. 2, SURENDRANAGAR	
CHKD BY	DEPUTY ENGINEER S. B. C. DN. NO. 4/1, LIMBI	
CHECKED BY	DEPUTY EXECUTIVE ENGINEER S. B. C. SIB DN. NO. 4/1A, LIMBI	